



VAPORMIST®

Electric-to-Steam Humidifier

- *Adaptable*
- *Reliable*
- *Easy to maintain*
- *Comprehensive control with Vapor-logic®*

Versatility for finished spaces



VAPORMIST HUMIDIFIER

Vapormist humidifiers use heat caused by electrical resistance in submerged heating elements to boil fill water into steam. Vapormist is compatible with all water types and numerous dispersion options, including matching Space Distribution Units that can be mounted remotely or on top of the Vapormist, as shown above.

The Vapormist humidifier is a compact, cabinet-style unit compatible with all water types (tap, softened, deionized, reverse osmosis) and numerous dispersion options. Installation is a snap — just attach the frame to a supporting structure and connect electrical and water services.

Available matching Space Distribution Units disperse steam with no visible vapor trail, making Vapormist ideal for use in finished spaces.

VERSATILE

- Uses tap, softened, or RO/DI water
- Capacity from 6 to 102 lbs/hr (2.7 to 46 kg/h), link up to 16 units for capacity up to 1632 lbs/hr (740 kg/h)
- Disperses steam through ductwork with dispersion tubes or panels, or directly into a room with a Space Distribution Unit (SDU) mounted remotely or on top of the Vapormist

FLEXIBLE

- Control to $\pm 3\%$ RH
- On-off or time-proportioned (TP) control for application control in most environments; solid-state relay (SSR) option for tight control
- Electronically monitored water level ensures safe and reliable operation

EASY TO MAINTAIN

- Removable cover allows easy access to evaporating chamber and electrical connections
- Softened water significantly reduces maintenance requirements
- End-of-season autodrain minimizes microbial growth
- User-adjustable water skimmer skims off floating minerals
- Controller-operated drain and flush removes precipitated minerals from evaporating chamber
- Constant thermal expansion and contraction of heating elements continuously sheds mineral buildup

COMPREHENSIVE CONTROL WITH VAPOR-LOGIC

Vapormist with Vapor-logic sets new standards for control in electric steam humidification:

Interoperability allows communication with building automation systems via Modbus or with optional BACnet or LonTalk protocols.

Safety presets initiate fill and drain cycles and keep the humidifier cool and safe if sensed conditions, though unlikely, could be hazardous.

Web-enabled control allows you to set up, view, and adjust humidifier functions via Ethernet, either directly or remotely through a network.

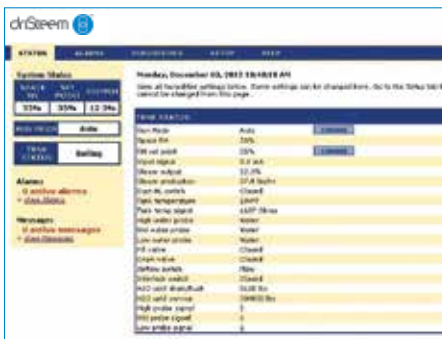


Table 3-1:
Vapormist capacities, electrical specifications, and weights

VM model	Maximum steam capacity		Current draw (amps)											Weights ‡			
			Single-phase						Three-phase					Shipping		Operating	
kW	lbs/hr	kg/h	120V	208V*	240V*	277V	480V†	600V†	208V*	240V†	277V	480V†	600V†	lbs	kg	lbs	kg
2	6	2.7	16.7	9.6	8.3	7.2	4.2	3.3	—	—	—	—	—	80	36	95	43
4	12	5.4	33.3	19.2	16.7	14.4	8.3	6.7	16.7**	14.4**	12.5	7.2**	5.8**	80	36	95	43
6	18	8.2	—	28.8	25.0	21.7	12.5	10.0	25.0**	21.7**	18.8	10.8**	8.7**	88	40	122	55
8	24	10.9	—	38.5	33.3	28.9	16.7	13.3	33.3**	28.9**	25.0	14.4**	11.5**	88	40	122	55
10	30	13.6	—	—	41.7	36.1	20.8	16.7	29.1**	25.3**	21.9	12.6**	10.1**	93	42	139	63
12	36	16.3	—	—	—	43.3	25.0	20.0	33.3	28.9	25.0	14.4	11.5	93	42	139	63
14	42	19.1	—	—	—	—	29.2	23.3	38.9	33.7	29.2	16.8	13.5	93	42	139	63
16	48	21.8	—	—	—	—	33.3	26.7	44.4	38.5	33.3	19.2	15.4	93	42	139	63
21	63	28.6	—	—	—	—	43.8	35.0	—	—	43.8	25.3	20.2	95	43	152	69
25	75	34.0	—	—	—	—	—	41.7	—	—	—	30.1	24.1	95	43	152	69
30	90	40.9	—	—	—	—	—	—	—	—	—	36.1	28.9	101	46	156	71
34	102	46.3	—	—	—	—	—	—	—	—	—	40.9	32.7	101	46	156	71

* On 208V/240V/single-phase/three-wire and on 208V/three-phase/four-wire supplies, the neutral line provides a separate 120V circuit for the SDU fan unit.

** For wire sizing, the highest leg draw is shown due to current imbalance.

† Add the following to Vapormist weights if using an SDU option (these weights are for additional control components housed within the Vapormist cabinet):

– SDU-I: 12 lbs (5.5 kg) (SDU-I shipping weight is 68 lbs [31 kg])

– SDU-E: 9 lbs (4 kg) (SDU-E shipping weight is 61 lbs [28 kg])

‡ Add the following if using the SSR option:

– For single-phase or three-phase models drawing less than 32.7 amps, add 2 lbs (1 kg)

– For three-phase models drawing more than 32.7 amps, add 4 lbs (2 kg)

All Vapormist models operate at 50/60 Hz.

DRI-STEEM Corporation

a subsidiary of Research Products Corporation
DriSteem U.S. operations are
ISO 9001:2015 certified

U.S. Headquarters:
14949 Technology Drive
Eden Prairie, MN 55344
800-328-4447 or 952-949-2415
952-229-3200 (fax)

European office:
Grote Hellekensstraat 54 b
B-3520 Zonhoven
Belgium
+3211823595
E-mail: dristeem-europe@dristeem.com

Continuous product improvement is a policy of DriSteem; therefore, product features and specifications are subject to change without notice.

DriSteem, Rapid-sorb, STS, Ultra-sorb, Vapor-logic, and Vapormist are registered trademarks of Research Products Corporation and are filed for trademark registration in Canada and the European community.

Product and corporate names used in this document may be trademarks or registered trademarks. They are used for explanation only without intent to infringe.

© 2020 Research Products Corporation



Form No. VM-BRO-EN-0320

EXPECT QUALITY FROM THE INDUSTRY LEADER

Since 1965, DriSteem has been leading the industry with creative and reliable humidification solutions. Our focus on ease of ownership is evident in the construction of the Vapormist humidifier, which features cleanable, stainless steel construction. DriSteem leads the industry with a Two-year Limited Warranty and optional extended warranty.

For more information
www.dristeem.com
sales@dristeem.com

For the most recent product information visit our website:
www.dristeem.com